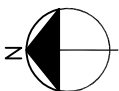


Brookfield



BUILDING

FIFTH AVENUE PLACE
 237 4th AVENUE S.W.
 425 1st STREET S.W.
 CALGARY, ALBERTA

FLOOR AND AREA

MAIN LEVEL

UPDATED BY

Coupland Kraemer Architecture + Interior Design

SCALE

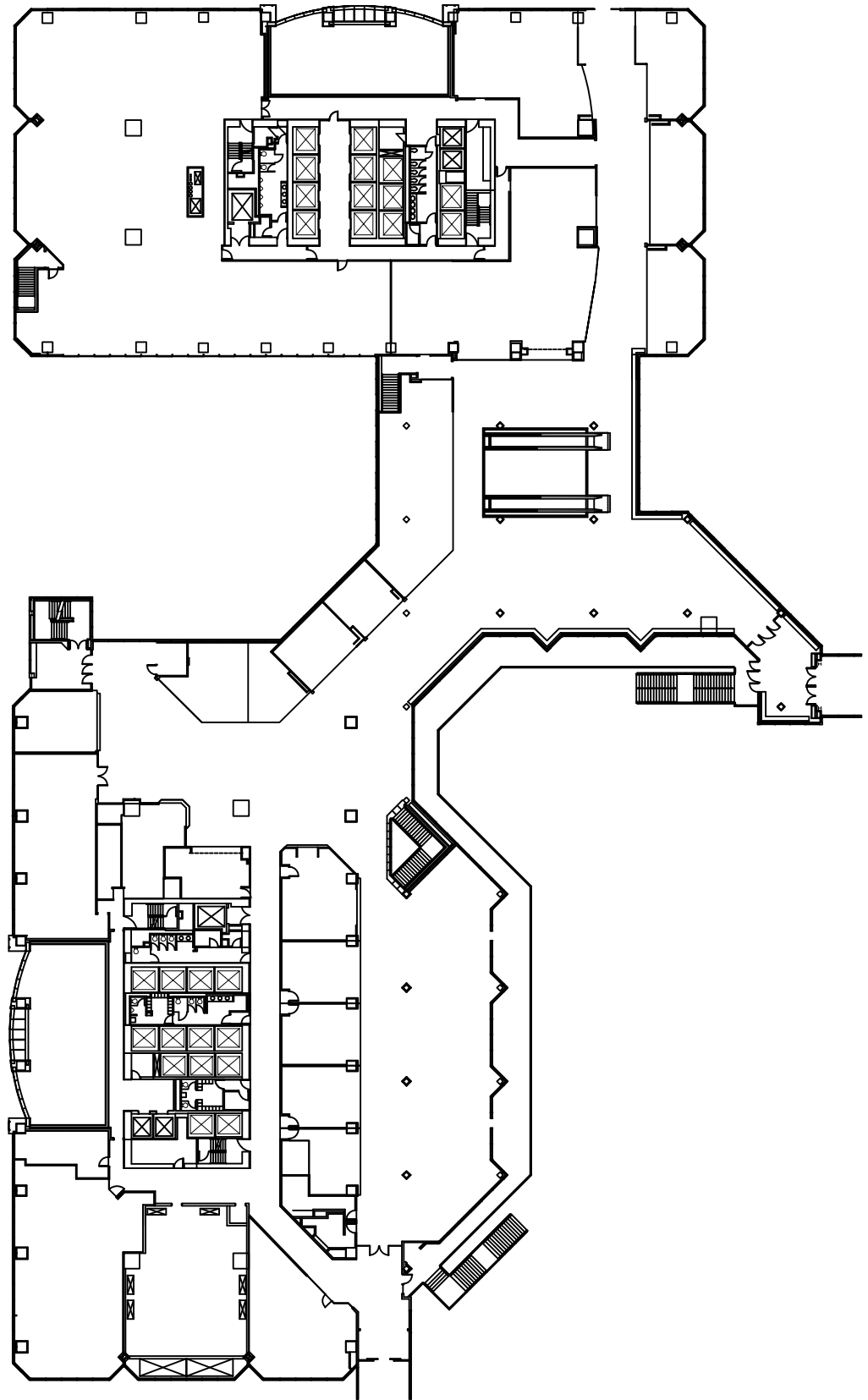
AS NOTED

DATE

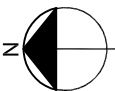
December 2004

DWG #

A-Et-M



Brookfield



BUILDING

FIFTH AVENUE PLACE
 237 4th AVENUE S.W.
 425 1st STREET S.W.
 CALGARY, ALBERTA

FLOOR AND AREA

+15 LEVEL

UPDATED BY

Coupland Kraemer Architecture + Interior Design

SCALE

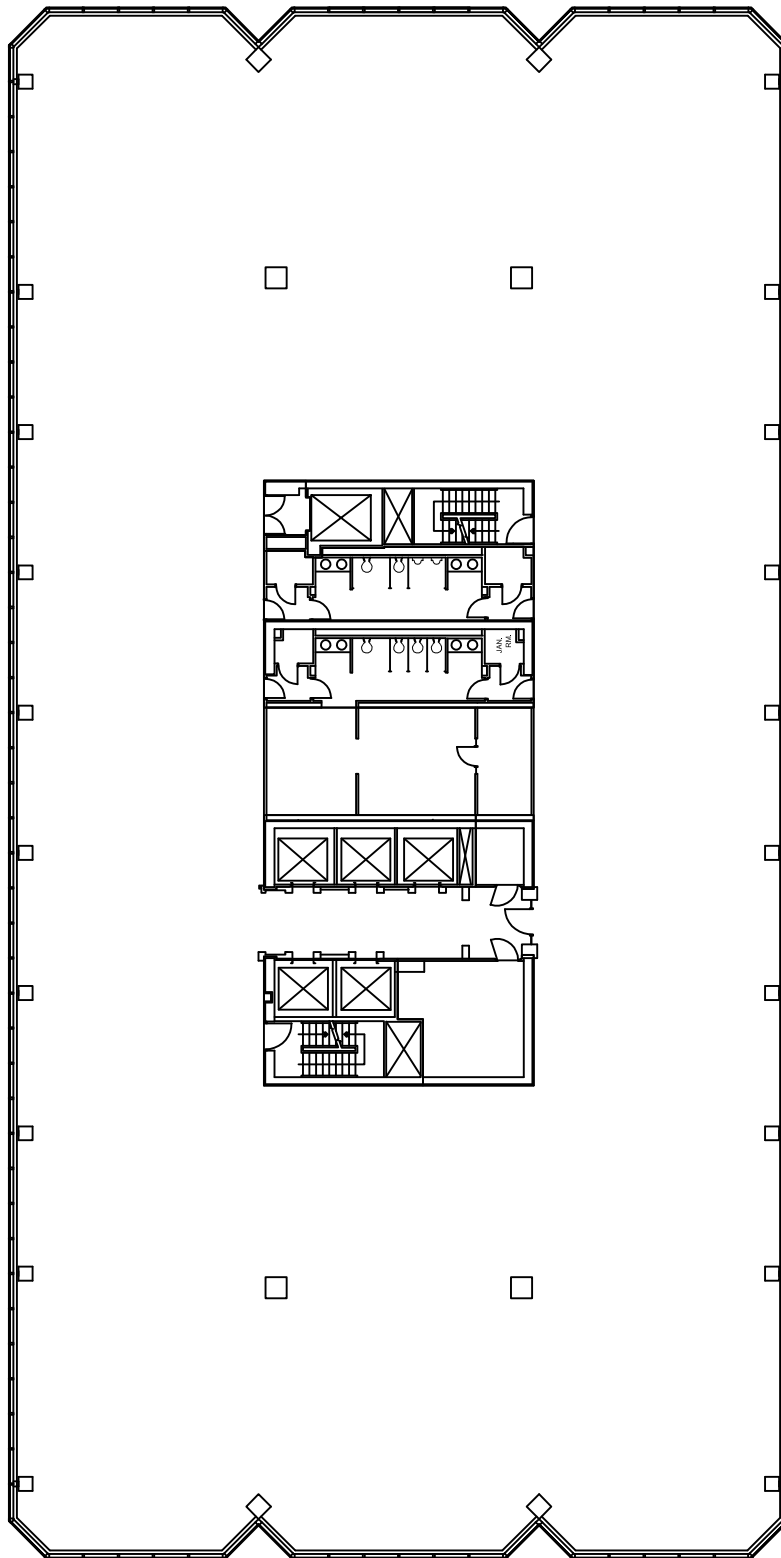
AS NOTED

DATE

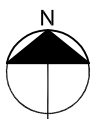
OCT 2004

DWG #

A-+15 Level



Brookfield



BUILDING

FIFTH AVENUE PLACE
 EAST TOWER
 425 1st STREET S.W.
 CALGARY, ALBERTA

FLOOR AND AREA

Typical High Rise

UPDATED BY

Brookfield Properties Corporation

SCALE

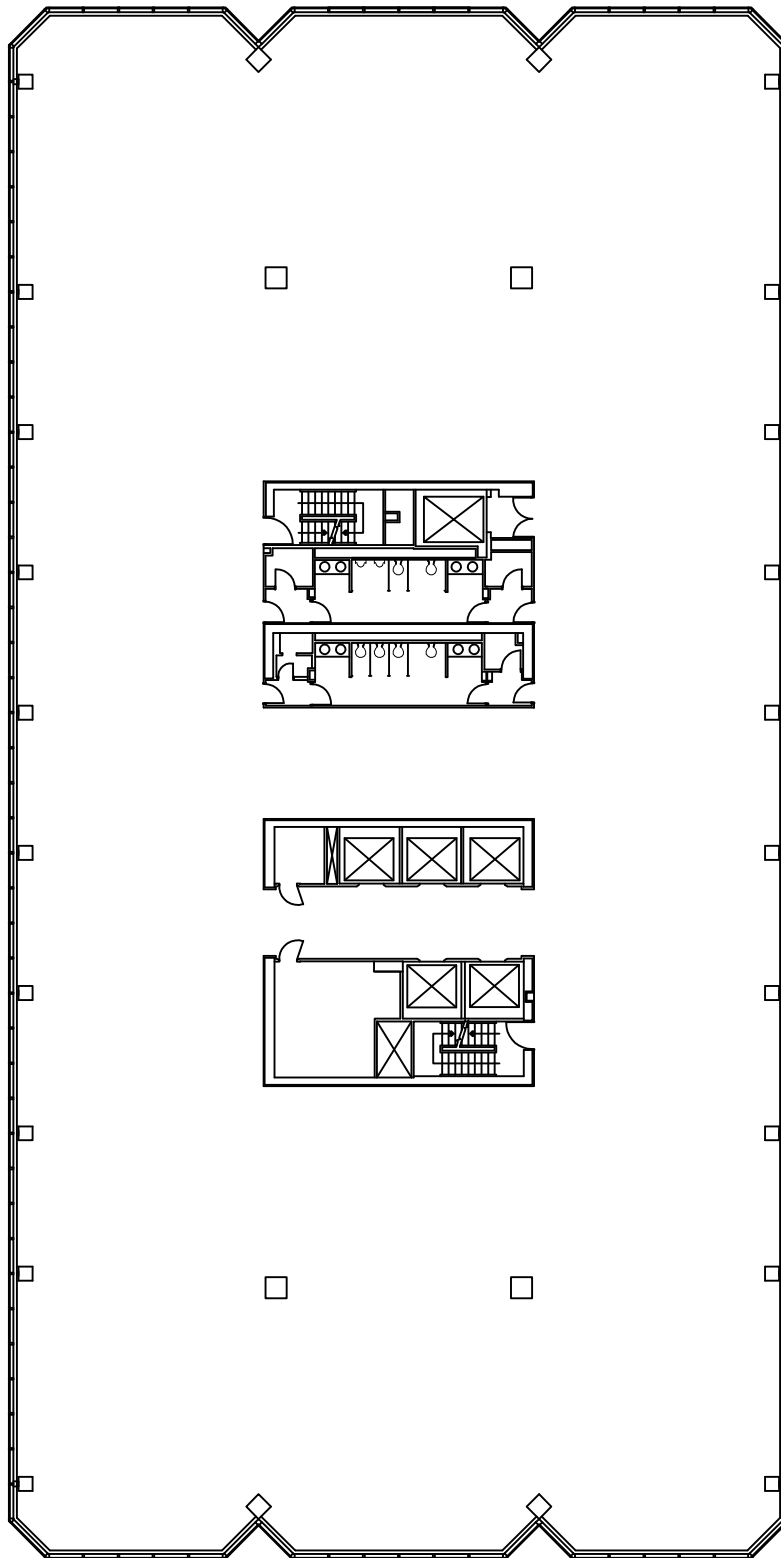
AS NOTED

DATE

June 14, 2001

DWG #

A-Et-33



Brookfield



BUILDING

FIFTH AVENUE PLACE
WEST TOWER
237 4th AVENUE S.W.
CALGARY, ALBERTA

FLOOR AND AREA

Typical High Rise

UPDATED BY

Brookfield Properties Corporation

SCALE

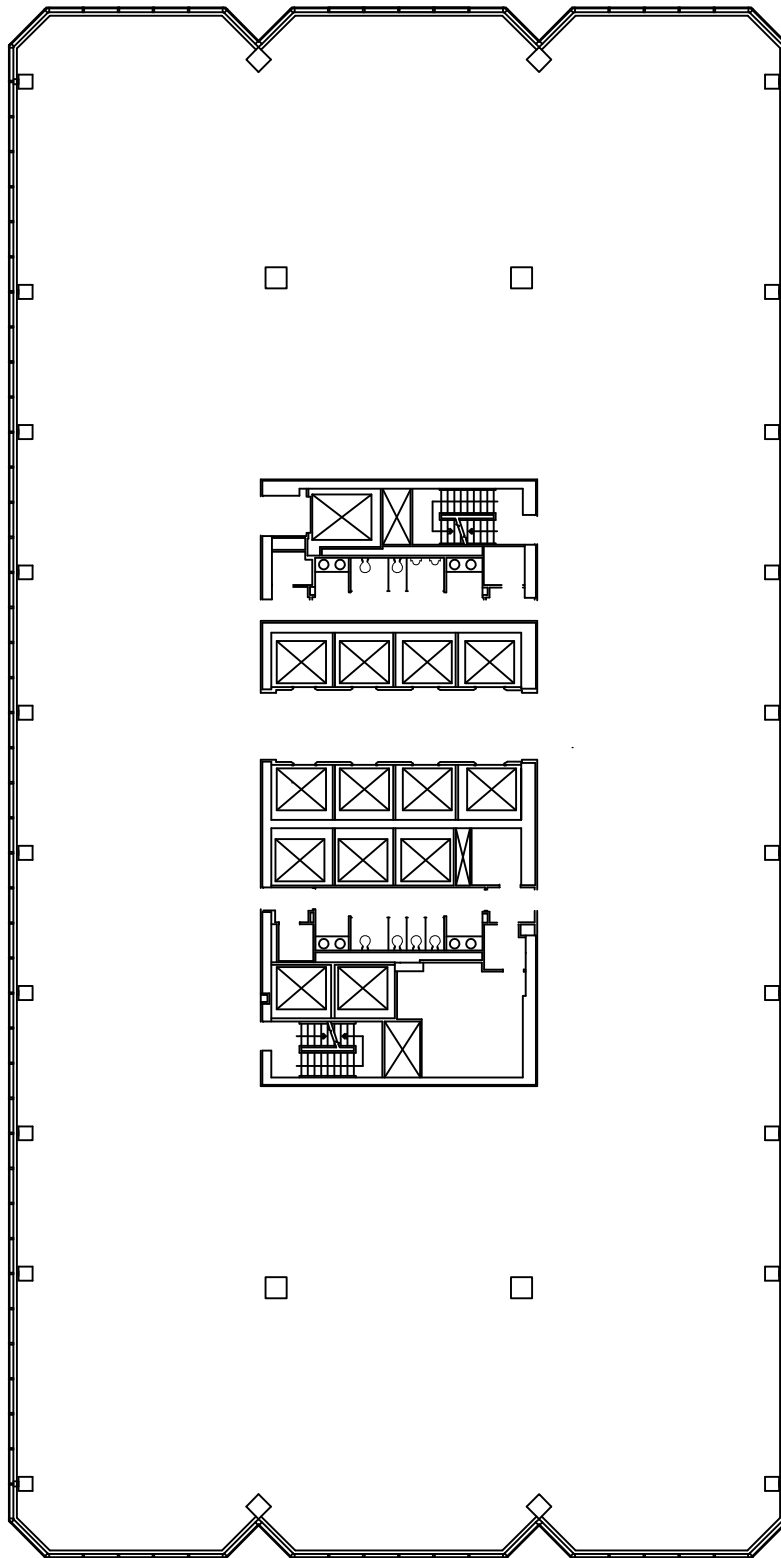
AS NOTED

DATE

June 14, 2001

DWG #

A-Wt-30



Brookfield



BUILDING

FIFTH AVENUE PLACE
 EAST TOWER
 425 1st STREET S.W.
 CALGARY, ALBERTA

FLOOR AND AREA

Typical Low Rise

UPDATED BY

Brookfield Properties Corporation

SCALE

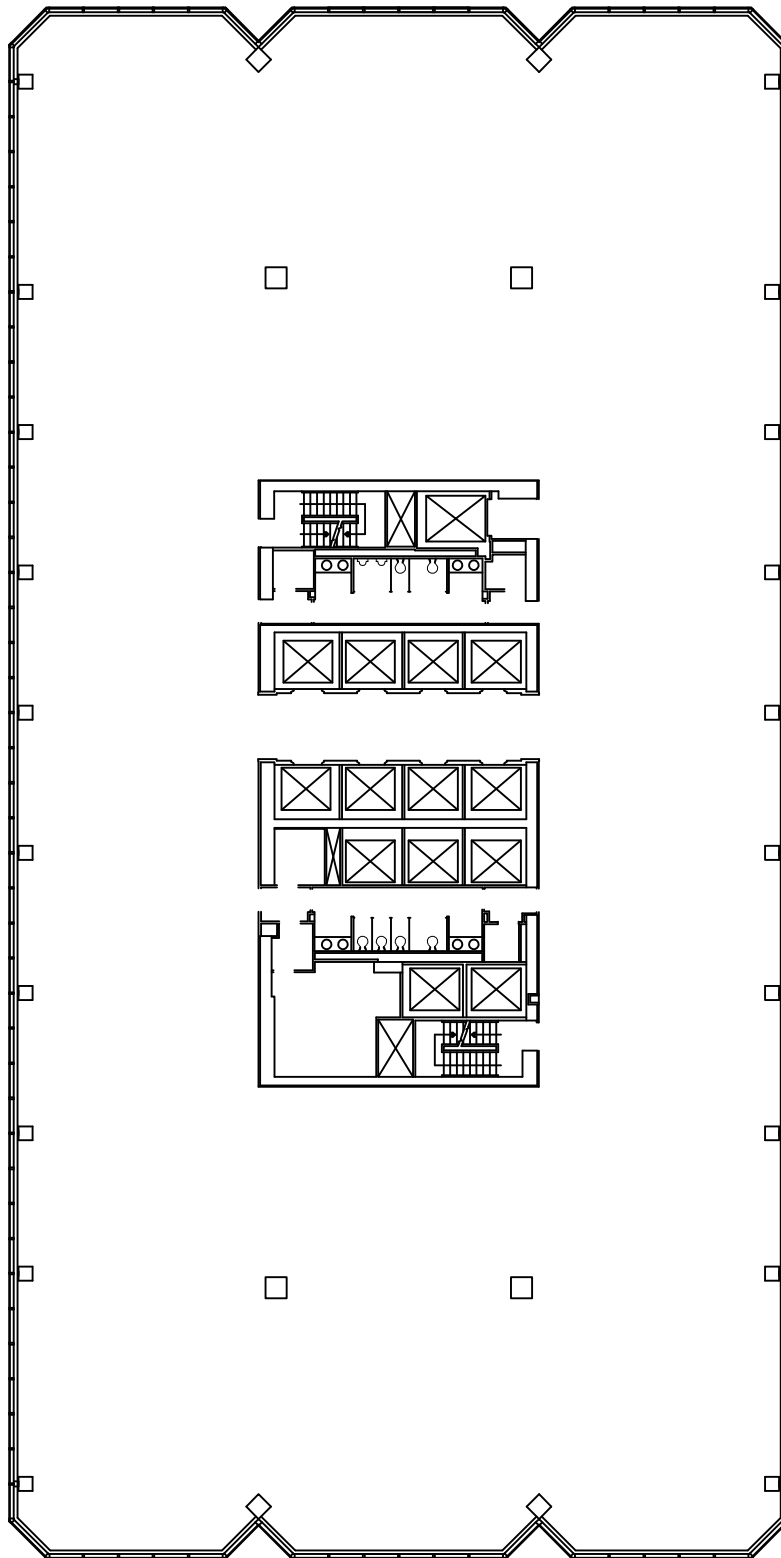
AS NOTED

DATE

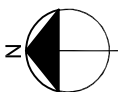
May 31, 2001

DWG #

A-EI-07



Brookfield



BUILDING

FIFTH AVENUE PLACE
 WEST TOWER
 237 4th AVENUE S.W.
 CALGARY, ALBERTA

FLOOR AND AREA

Typical Low Rise

UPDATED BY

Brookfield Properties Corporation

SCALE

AS NOTED

DATE

June 27, 2001

DWG #

A-Wt-03