

First Canadian Place | Building Specifications

General Description

Located in downtown Toronto, First Canadian Place (FCP) is an impressive 2.8 million sq. ft. office, banking, shopping complex and parking. With 72-storeys, the office tower has remained unchallenged as the tallest office building in Canada since it was constructed in 1975.

First Canadian Place is a certified green building with a Gold level of certification in the Leadership in Energy and Environmental Design (LEED®) Existing Buildings: Operations and Maintenance program.

As a Class AAA office complex with 3-levels of over 120 stores, restaurants, and services First Canadian Place is also considered one of Canada's premier business addresses. Also, over 21 million people visit First Canadian Place annually.

The word impressive succinctly describes First Canadian Place. The main entrance lobby features 23-foot high ceilings lit with Italian crystal chandeliers and walls clad in rare marble.

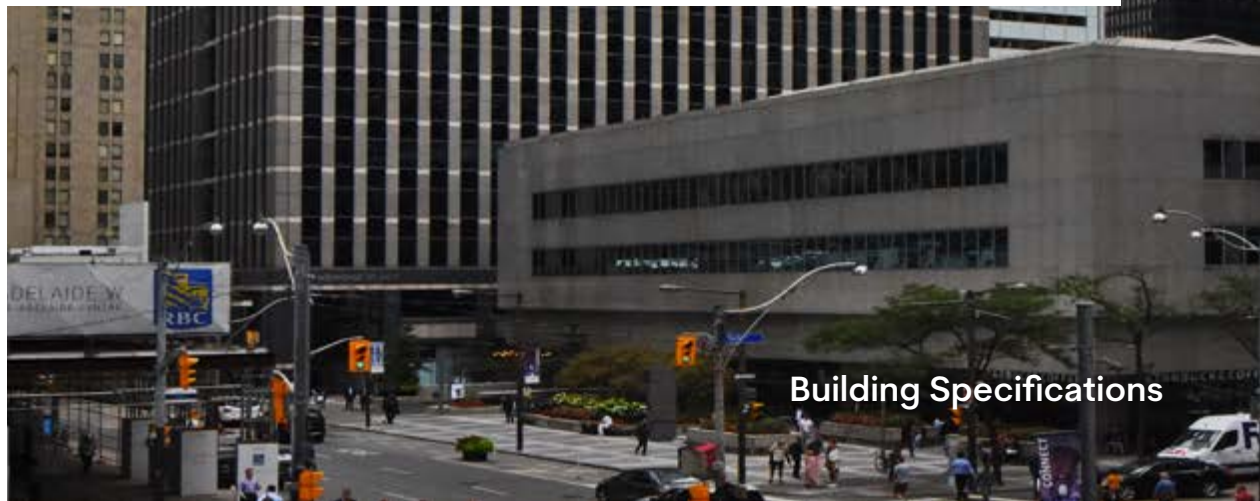
Since 1975, FCP has been considered ahead of its time - exceeding building code requirements and operational standards, while also providing the most comprehensive array of tenant services and amenities.



Design Architect	B+H Architects
General Contractor	Olympia & York
Mechanical Engineer	E.C.E. Group Ltd.
Electrical Engineer	Vaughan Byrnes
Structural Engineer	M.S. Yolles & Partners Ltd.
Completion Date	1975
Building Height	72 stories
Design Load	20 pounds per square foot partition load 80 pounds per square foot live load
Rentable Area	Approximately 2,676,000 SF
Typical Floor Area	Approximately 31,000 SF
Ceiling Heights	Slab-to-slab heights on office floors average 12' 8" Standard floor to ceiling height is 9'0"
Mullion Spacing	10 feet
Interior Columns	None
Heating, Ventilation and Air Conditioning	The Building Automation and Energy Management System is primarily Johnson Controls and Metasys equipment. In addition to equipment operation and control, the system performs demand totalization, load shedding, duty cycling, etc. functions.
Design Criteria	The building's HVAC systems are designed to meet or exceed current Building Code requirements. Design conditions are based upon occupancy of not more than one person per 100 usable square feet.



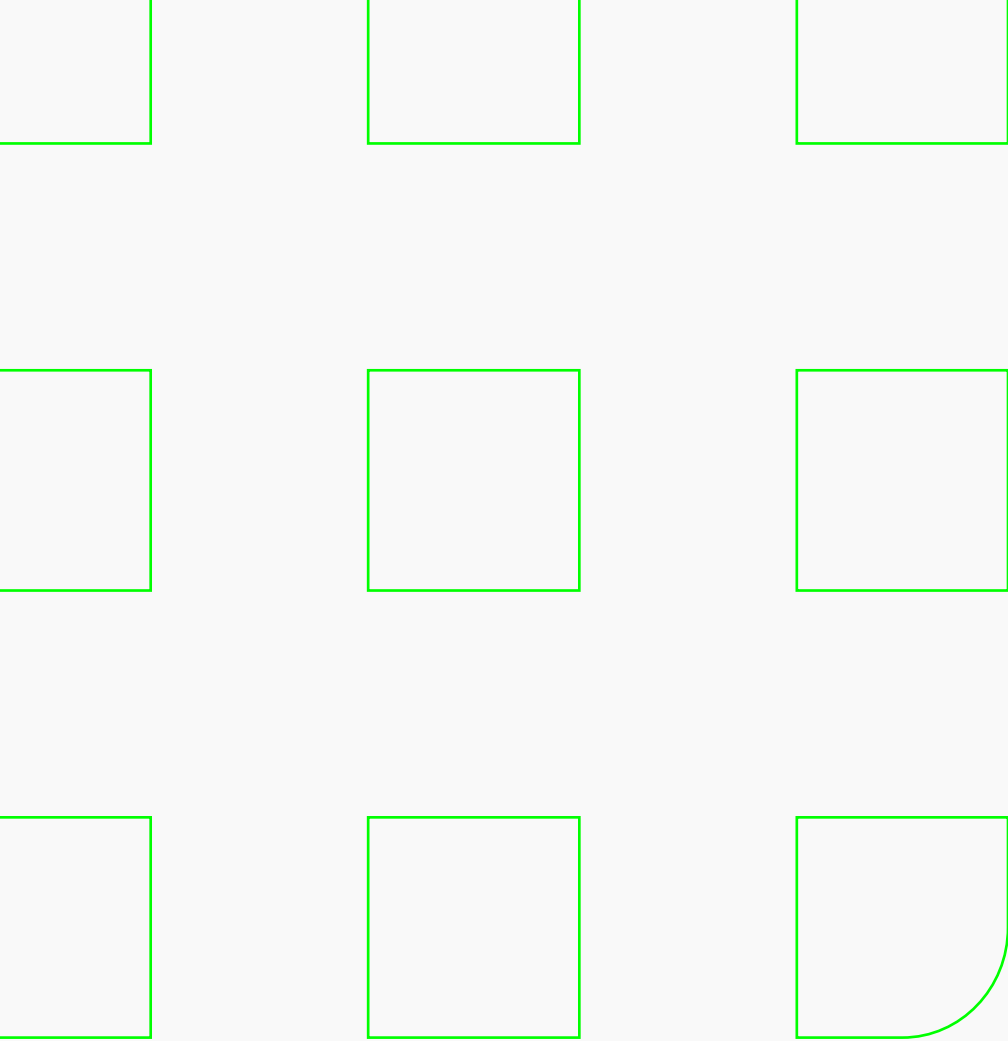
Heat	Heat is supplied by 8 high efficiency gas fired non-condensing boilers, and 2 condensing boilers.
Air Conditioning	Cooling is provided by 9 centrifugal chillers with a total of 8,300 tons of cooling capacity.
Standard Hours of HVAC Operation	7:30 AM to 6:00 PM, Monday through Friday 9:00 AM to 6:00 PM, Saturday Supplemental HVAC is available 24 hours a day
Electricity	Building-standard power consists of 2.0 watts per usable square foot for ceiling lighting and 2.6 watts per usable square foot for floor service provided by Toronto Hydro. Additional power is available based upon demonstrated need.
Electric Closet	3 per floor
Telephone Closet	3 per floor
Number of Passenger Elevators	The building is serviced by 29 tandem (58 cabs) Passenger Elevators, as follows: 8 "A" bank elevators (N.W. bank) services floors 3-23 7 "B" bank elevators (N.E. bank) services floors 24-42 7 "C" bank elevators (S.E. bank) services floors 43-56 7 "D" bank elevators (S.W. bank) services floors 57-72
Passenger Elevator Capacity	3,500 lbs.
Passenger Elevator Speed	800 to 1,200 FPM (ft. per minute), depending on bank





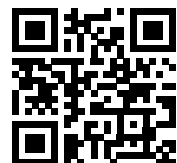
Number of Service Elevators	<p>The building is serviced by 6 service and 3 parking shuttle elevators, as follows:</p> <p>Service Elevators</p> <ul style="list-style-type: none">• 3 main service elevators located in the elevator core of the building service B1, concourse, lobby and all above ground floors. They are secured by card access at all times.• 3 smaller service elevators located on the north side of the building serve the B3, B2, B1 (loading dock) level as well as the concourse, lobby, food court and Board of Trade levels. <p>Parking Shuttle Elevators</p> <ul style="list-style-type: none">• 2 shuttle elevators servicing all parking levels as well as the concourse, lobby and food court and one services the loading dock also.• 1 shuttle elevator servicing the "H" level of parking only.
Service Elevator Capacity	3,000 lbs. to 7,000 lbs. depending on the cab.
Service Elevator Size	8' 0" long, 7' 0" wide, 10' 0" high (largest cab)





Brookfield
Properties

axiistentantapp.com/fcp



SCAN TO DOWNLOAD
THE FREE APP