



Construction Update – November 25, 2024

UPCOMING CONSTRUCTION IMPACTS

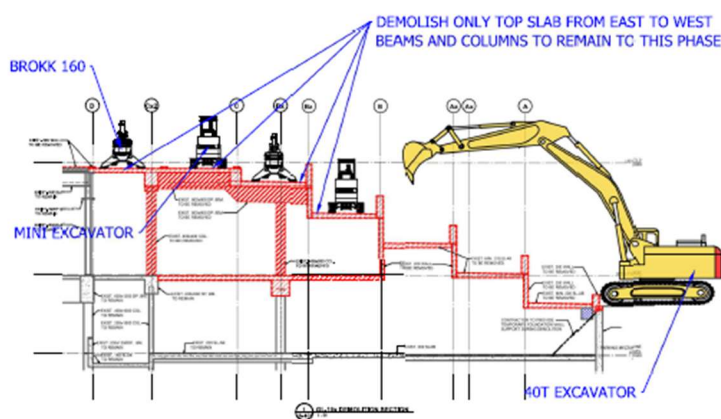
We want to keep our tenants and guests informed about potential impacts to daily routines at the property and ensure everyone’s safety. Construction updates like this, along with wayfinding signage, posters, and axis posts, will be shared throughout the redevelopment.

01 COMMON AREA OVERNIGHT WORK – STARTING NOVEMBER 25

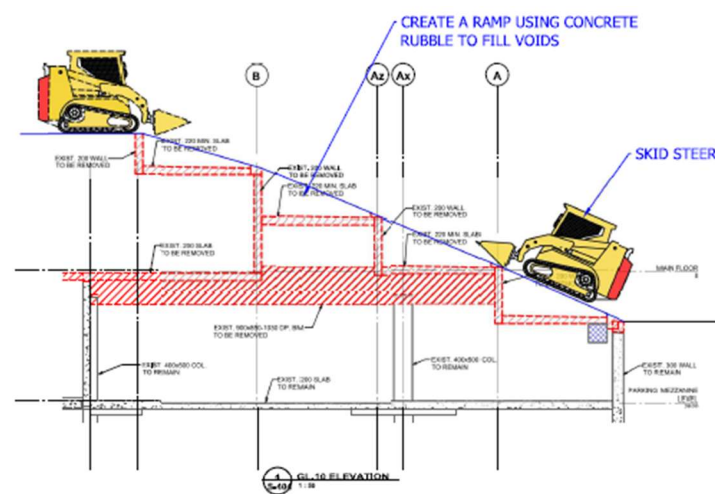
- Construction work in common areas (Main, Plus 15, and Plus 30 levels) will begin November 25 after 6:00 pm which will result in higher noise levels.
- Movement throughout the common areas will not be affected during this work.

02 DEMOLITION - FOOD COURT TERRACE AND EXTERIOR PLANTERS

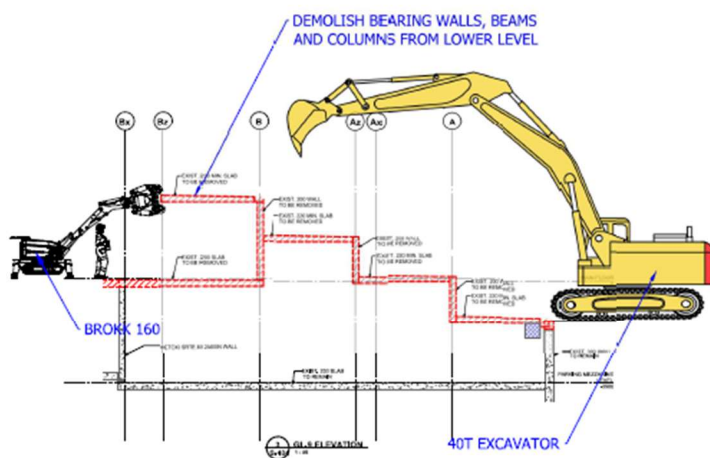
- Over the next several months, a controlled and engineered demolition of the exterior food court terrace and planters will take place. We understand the importance of safety to our tenants, just as it is to us, and wanted to share the phasing and control measures that are in place to ensure everyone’s well-being:



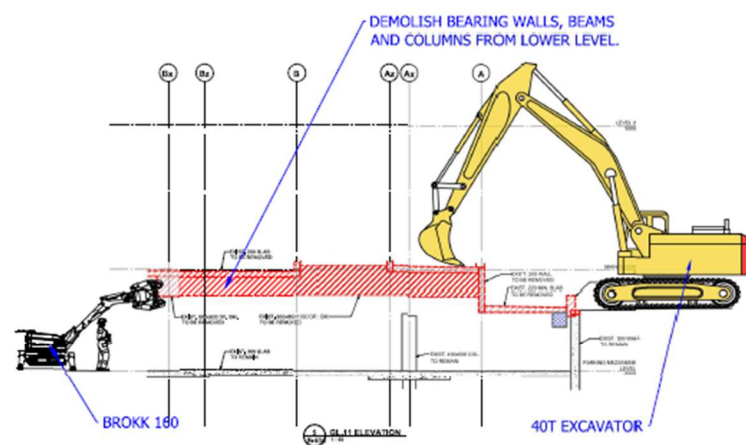
7 SOUTH ENTRANCE PLANTERS DEMOLITION ELEVATION



8 SOUTH ENTRANCE ACCESS RAMP ELEVATION



9 SOUTH ENTRANCE 2ND SLAB DEMOLITION ELEVATION



10 SOUTH ENTRANCE 1ST FLOOR DEMOLITION ELEVATION

Please follow all posted signage to ensure your safety, and the safety of others.